



Photo by @blondeshooter

Reef Breezes

17th May, 2019

Please send photos of the course to
michelle@lrgc.com.au

REEF BREEZES



May 17th 2019

Ph: 9971 8113

Fax: 9982 4648

Email:

office@longreefgolfclub.com.au

BOARD APPOINTMENTS:

The Board of Directors of LRGC is pleased to announce the appointments of Gilda Severino and Sean Lee to the Board effective immediately.

Gilda joined the Club in 2005 and is currently the Women's President.

She was employed with Givaudan Australia for over 22 years including the last eleven as Fragrance Country Director Oceania reporting to Singapore. Her role included sales, logistics and governance.

Sean is a Bachelor of Pure Economics and owns a foreign exchange trading and IT consulting business.

He has represented the Club in Major Pennants and is currently playing Masters Pennants. He has managed the Major Pennants team for the last 2 seasons. He will take on the role as Vice-Captain.

We welcome both to the Board and look forward to a long-term working relationship.

Stephen Twigg

President



Photo by Dave Wing

CAPTAIN'S CORNER



We started the Wetlands Project on Monday with the erection of the safety fences and playing the temporary course.

With the shorter course it looks like the round times are down by over 20 minutes; this together with shorter winter days means fewer times available.

Ian Brown obviously liked the changes with a fine 2 under on Wednesday and in last Saturday's gale Lewie Meakins led the field with 41pts and also won scratch.

Please make yourself aware of the updated Local Rules as there have been some changes.

Holes in one were prevalent, Rex Adams on 7th and Paul Hope continued his run with a perfect 8 iron on the 13th.

Eagles Nest – 8th on Sat

With the 8th now a par 3 on the Temporary Course the EAGLES NEST for 2nd shot will move to the 6th hole.

A few of the boys wanted to get away from the Sydney weather for a weekend at Mudgee. The only thing that warmed them was Prossie being hit twice by his partner's ball; know a good Physio???

And for those that haven't played recently the left hand 'rough' and fenced area off the 9th tee is now a Red Penalty Area, which should speed up play.

Times at other Courses.

We have been offered times at other courses during our Wetlands Project.

Ben will publish tee times (on the notice board and members portal) each Friday for the week beginning 10 days later (Monday Week).

Mick Snell Cup – Qualifying Sat 25 May

Singles knock out – details on Notice Board

Les Browne Captain

FROM THE WOMEN



I am sure all our Mothers, Grandmothers and Great Grandmothers enjoyed their special day last Sunday. You all truly deserved to be spoiled!

The Wetlands Project has now finally begun. Please ensure we all adhere to the new Local Rules, in particular if a ball comes to rest in a construction zone. Please do not enter any construction area for any reason.

Our Silver Pennant Team squared their match against Pymble at Pennant Hills GC, 2.5/2.5. Great wins by Susan Hay 6/5 and Karen Smith 2 Up while Jane Hagan squared her match.

This Friday our Silver Team travel to Monash Golf Club to play Killara for their final match of the season. The team is Susan Hay, Karen Smith F/C, Fiona Bone, Rachael Loomes, Jane Hagan. Reserve Rosemary West. Good luck!!!

This week we have commenced competition for our most "Prestige" Trophy of the Year!!

The President's Trophy!!

On Tuesday Round 1 winners were;

| | | |
|---------------|----------------------|------|
| Prue Bardsley | def Cath Piper | 1Up |
| Karen Smith | def Veronica Bertram | 1Up |
| Pam Burke | def Muriel Dawson | 5/3 |
| Diana Sier | def Marilyn Denner | 3/2 |
| Jill Hensman | def Nan Crump | 2 Up |
| Helen Ayres | def Michelle Ison | 3/2 |
| Ondrae Heiser | def Jan Daniel | 1 Up |
| Maria Russell | def Maryann Ward | 2/1 |

On Thursday Round 2 Winners were:

| | | |
|---------------|-------------------|-----|
| Karen Smith | def Prue Bardsley | 6/5 |
| Pam Burke | def Diana Sier | 3/1 |
| Jill Hensman | def Helen Ayres | 8/7 |
| Maria Russell | def Ondrae Heiser | 4/3 |

Next Tuesday the semi final will be played by;

| | |
|--------------|------------------|
| Karen Smith | vs Pam Burke |
| Jill Hensman | vs Maria Russell |

9 Hole Competition:

| | | |
|-------------------|----------------|-------------|
| 1 st : | Helen Kook | (45) 17 |
| 2 nd : | Gilda Severino | (21) 16 c/b |

18 Hole Competition:

Div 1.

| | | |
|-----------------|-------------|-------------|
| 1 st | Julia Bowen | (5) 36 |
| 2 nd | Kim Sloane | (14) 32 c/b |

Div 2.

| | | |
|-----------------|----------------|-------------|
| 1 st | Robyn Lyon | (28) 32 |
| 2 nd | Leonie Malcolm | (17) 32 c/b |

Div 3.

| | | |
|-----------------|---------------|---------|
| 1 st | Judy Gietz | (42) 34 |
| 2 nd | Michelle Ison | (36) 33 |

Scratch: Julia Bowen

NTP

7th: Rowena Robinson

10th: Alyssa Starc

13th: Leonie Malcolm

Balls to: 29

Other winners for week were;

| | | | |
|-----------------|----------------|------|--------|
| Saturday | Emma Thurlow | (10) | 33 pts |
| Sunday | Jill Hensman | (36) | 41 pts |
| Monday | Susan Ramsay | (34) | 32 pts |
| Tuesday | Rachael Loomes | (17) | 36 pts |
| 9 Holes | Jeanette Nell. | (27) | 23 pts |

Our Rookies continue to improve whilst still having lots of fun. Winners this week.

1st: Fiona Woolley. (39) 18 pts

2nd: Wendy Hague. (35) 16 pts

Next Thursday will be final of the President Trophy. Very exciting week!!

In the meantime have a great week.

Gilda Severino Women's President

RULES WITH GEORGE



QUESTION: In a Stroke event Carl hit his ball left on the first hole. Luckily it stayed just out of the left hand red penalty area. When he was taking his stance to play his second stroke he found that although the ball was outside the penalty area, a red peg marking the area was interfering with his backswing so he pulled out the red peg. "General penalty" said Phil, another player in the group. Those pegs are immovable obstructions under the Local Rules. Carl put the red peg back into its original hole before playing his stroke. Which is true?

(a) Carl must add two strokes penalty to his score for the hole. There is nothing he can do to eliminate the penalty once he had acted in that way, by removing an immovable obstruction interfering with his stroke or stance.

(b) Carl is not penalised, and in fact he may take relief from the stake by dropping away from it, before playing his stroke.

Thank you from FOSTER HOUSE



FOSTER HOUSE in the inner city would like to thank the members of LRGCC who kindly donated their old denim jeans and belts. The day prior to our donation arriving, they were handing out string for belts on suit trousers.

HOLES-IN-ONE

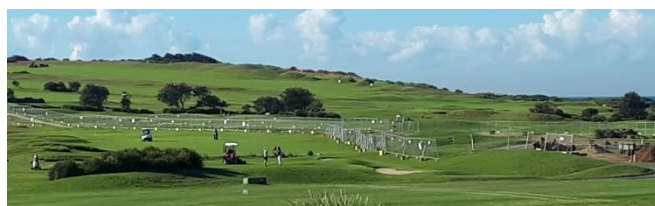


Rex Adams 7th hole Saturday 11th May



Paul Hope 13th hole Wednesday 15th May

Wetlands Project – 17th May Update



The fences have been erected and preparation for the construction is progressing. Flemings (our contractor) will start work next week and hopefully the dry weather continues.

Additional no go areas will be roped off e.g the 16th fairway so please 'keep out' and follow the signs.

The Temporary course has presented some 'different' approaches, particularly the 14th which is a real challenge and deserves it's #1 rating.

With the shorter course round times have come down by over 20 minutes.

With the fences now in place we have reviewed the Local Rules as follows.

Wetlands – Local Rules

- All Construction Areas and New Work are **COMPULSORY GUR** (whether marked or not)
- Fences, Stakes etc. defining the construction area are **Immovable Obstructions**.
- If a ball comes to rest within a fenced off area, the point of entry into the fenced off area should be used to determine the Reference Point for relief.
- Relief (no penalty) to be taken as follows;
 - According to Rule 16.1a (Nearest point of complete relief, not nearer the hole, plus one club length).
 - If the Reference point is within 20metres of a Dropping Zone (blue & white stake) then this Dropping Zone may be used as an additional option.
- Entering, or recovering balls from Construction Areas, bounded by construction fences or roped off areas **PROHIBITED**.
Penalty- Disqualification and Disciplinary action by the Board.

A GOOD WEEK FOR GEOFF



Geoff Cranfield started this week in top form winning The Lakes Senior Medal on Monday with a score of 73 and followed it up on Tuesday winning The Australian Senior Medal with a score of 72 to give him a strong lead in the NSW Seniors Classic. After a struggle at Avondale on the Wednesday he finished runner up in the NSW Seniors Classic and has qualified for NSW Senior Open which will be held in October at Thurgoona Country Club.



Dates for the Diary

May

Sun 19 Masters Pennant @ Georges River

Sat 25 Mick Snell Cup Qualifying

Sun 26 Masters Pennant @ Long Reef

June

Sat 1 President's Cup

Sun 2 Masters Pennant @ Long Reef

Sat 8 R 1 Mick Snell Cup

Mon 10 Queens Birthday – 2 Tee Start

Sat 15 R 2 Mick Snell Cup

Sun 16 Masters Pennant @ Long Reef

Sat 22 R 3 Mick Snell Cup

Sat 29 Final Mick Snell Cup

BRIDGE CLUB



Results of Pairs competition on 1st May
Second round of Pairs Championship

N/S

1st Ada Duignan/Jan Steward

2nd Mary McAdam/Helen Crott

3rd Trish Turner/Judy O'Malley

E/W

1st Jan Herringe/Lilith Gollan

2nd Kay Brideau/Jean Kirk

3rd Joyce Low/Jean Morey

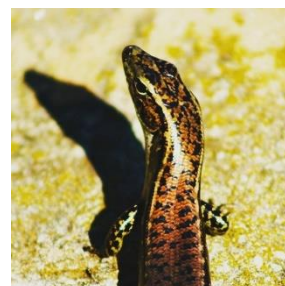
RULES WITH GEORGE



ANSWER: (b) is correct. Rule 8.1c

applies. There is no penalty so long as, before making a stroke, Carl eliminated the improvement by restoring the original object as nearly as possible to its original position so that the improvement created by the breach was eliminated. Carl did this and then, because his ball lay outside the penalty area, under **Rule 16** may take free relief from the stake, which is an immovable obstruction.

This is a complete turnaround from the rule existing before the **Rules of Golf 2019** became operational.





ROBERT OATLEY

MARGARET RIVER & McLAREN VALE

Wine Dinner

AT LONG REEF GOLF CLUB

JULY 19TH

6.30PM

6 COURSES WITH MATCHING WINES

\$95 PER PERSON

LUCKY DOOR PRIZES

Guest Speaker Darren Jahn

BOOKINGS ESSENTIAL

9971 8113 office@lrgc.com.au