



WETLANDS PROJECT - UPDATE 1st May 2019

Start Date – Monday 13th May

- Safety Fences erected w/c 13th May
- Preparation and excavating w/c 20th May

Duration – (*weather permitting*)

- Construction – 12 to 14 weeks
- Turfing and recovery – 6 weeks
- Course back to full 18 holes with new work GUR – September 2019
- Course almost fully recovered – December 2019

Preparation;

The practice chipping green has been de turfed. This turf is being used for the temporary 14th green. Some of the trees around the new wetlands and the dying pine on the 9th have been removed to enable construction.

What will Change;

- We will play temporary Course/Courses- details on Notice Board.
- Men-Par 66, Slope 114. Women Par-67, Slope 121.
- Score Card (Members and Visitors) will reflect the Temporary Course and Stroke Indexes changed to reflect hole difficulties. Details on the Notice Board.
- Pace of play will be quicker by an expected 20 to 30 minutes as the Temporary Courses are shorter with 4 additional Par 3's. Holes in One will be recognized on all holes.
- Possible delays on holes 14, 15 & 16 due to four Par 3's in a row. At this stage it is not planned to have 'call up'.
- Less tee times available on Wed, Sat & Sun, due to the shorter course – Five AM times and Three PM times (32 less spots) – This will be reflected in the timesheets released W/C 6th May.
- The GPS on the Golf Carts will be updated to restrict entry to construction areas.
- **Practice fairway:** Once works start on this area (mid June) it will not be able to be used.
 - Special pricing arrangements have been made with Narrabeen Driving Range (see Notice Board)
 - Special arrangements will be implemented for teaching by Professional Staff.
 - Note - when playing social rounds a maximum of two (2) balls can be played.
- Thursday's will have a 1 tee start, except for major events.
- Additional Local Rules;
 - New Work – Compulsory GUR this will include the wetlands area which is currently a Red Penalty Area.
 - Entering, or recovering balls from construction areas, bounded by fences is **prohibited**. Penalty-Disqualification and Disciplinary action by the Board.

Temporary Course

During Construction there will be Safety Fences and 'No Go' areas that will surround the excavation and the 'track' the dump trucks will use to disperse the fill on 15th and 16th. These

areas will be compulsory GUR and players **will NOT** be permitted to enter (even to recover their ball).

During construction the following holes will be affected;

Hole	Par	Tee	Green	Men's Distance	Women's Distance
8	3	On Fairway	Current	138m	108m
10	3	On Public Tee	Current	152m	152m
14	3	On White & Red Tee	Temp	179m	172m
15	3	On Fairway	Current	124m	124m
16	3	On LH Rough area	Current	115m	105m
18	4	On Yellow Tee	Current	266m	266m

Par

Men	66	Blue Slope	114
Women	67	Red Slope	121

There will be three separate Course layouts during construction.

Course A – Temporary Holes 8,10,14,15,16 & 18.

Course B – Temporary Holes 8,10,14,15 & 16.

Course C – Temporary Hole 18.

The temporary Course layout is displayed on the Notice Board.

The Men's and Women' Stroke indexes have been adjusted to reflect the changed difficulty of the holes.

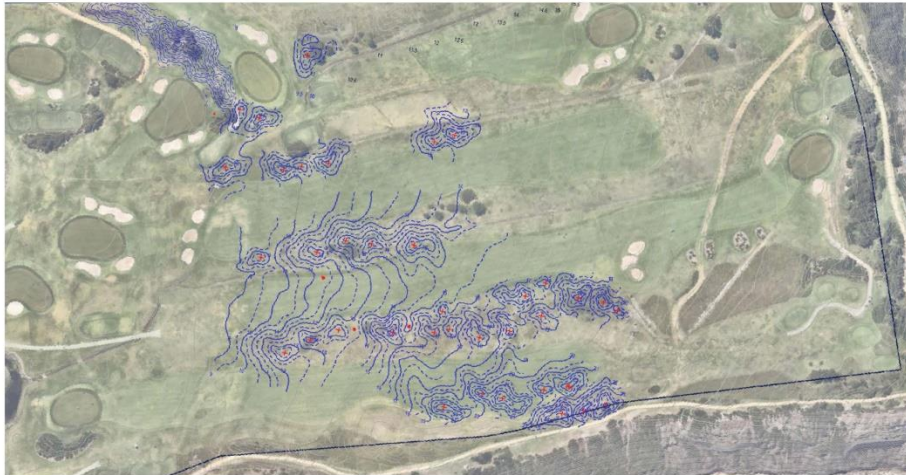
Depending on recovery we will play the full course once the turf has taken, however there will be considerable areas of compulsory GUR.

Times at other Clubs

Local clubs have been approached to provide times for Members. These will be advised in the next week or so. Members wishing to use this facility will need to ensure they comply with the host Clubs regulations. Booking tee times will be 2 weeks in advance at the Kiosk.

Wetlands Project – Summary of Changes

Holes 9, 14, 15 & 16



9th – With the demise of the pine tree (which is an integral feature of the hole) a high mound will be constructed with a bunker and trees

14th, 15th - Mounding will be positioned between each of these fairways to better define the holes, which will marginally impact the 10th.

16th - The fairway will be moved to the north to further alleviate balls going OOB. Balls landing on the fairway will either stay on the fairway or run onto the northern mounding (part of which will be at fairway height). The area from the tee to the fairway will be partially levelled to alleviate short drives running into the long grass.

Holes 8, 9, 18, Practice Fairway and Chipper



8th – Will have water on the southern side.

18th – No changes apart from Practice fairway.

Practice Fairway – Will be raised to minimise dampness and flooding. It will be 15+ metres longer and the tee box wider (as the access road is no longer required).

Chipper – Will be re positioned near the current site and rebuilt including a practice bunker. It will also be used as a 'spare hole' (with water on the left!).

Wetlands Project - Score Card for Temporary Course

Hole	1	2	3	4	5	6	7	8	9	10	11	12	13	14	15	16	17	18	Total	Scratch	Slope
Men Blue																					
Temporary Par	5	3	4	4	4	4	3	3	5	3	4	4	3	3	3	3	4	4	66	66	114
Temporary Distance	441	139	303	382	341	263	173	138	438	152	367	330	129	179	124	115	391	266	4671		
White Distance	430	125	285	377	325	247	160	138	429	152	345	321	112	179	124	115	369	266	4499	66	
Stroke Index	9/21	11/33	14/32	4/23	5/20	17/35	6/27	13/31	18/30	3/22	7/24	10/26	15/36	1/28	8/25	16/34	2/19	12/29			
Women Red																					
Temporary Par	5	3	4	5	4	4	3	3	5	3	4	4	3	3	3	3	4	4	67	68	121
Temporary Distance	433	134	261	366	292	257	120	108	426	152	358	302	99	172	124	105	340	266	4315		
Stroke Index	2/19/37	11/33	13/32	14/27/4	1/22/42	12/26/3	15/35	16/31	10/21/4	8/28	5/23/44	4/24/45	17/34	7/29	6/30/43	18/36	3/20/39	9/25			